



FACTSHEET

Women's Economic Empowerment in Quy Hau Agriculture Cooperative

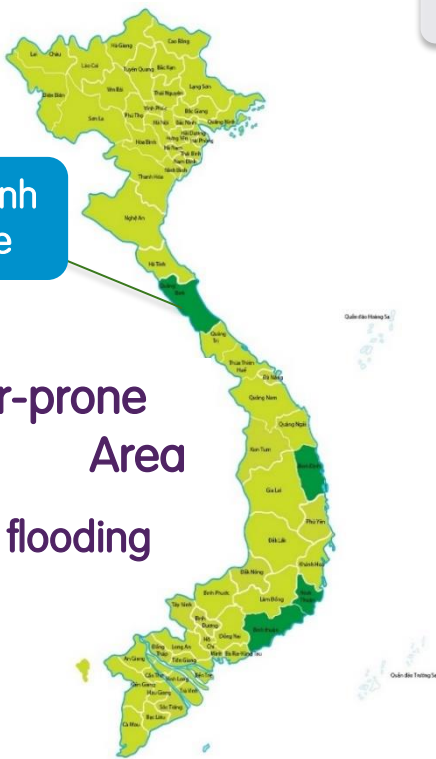
About the Cooperative

Quy Hau is an agricultural cooperative in Quang Binh province, a disaster-prone area that is negatively impacted by climate change and extreme weather events. They work mainly in rice with a production area of 314 ha spread over different terrains. Quy Hau has 2595 rice farming members, of which 1800 are women. Even though women form the majority of the work force in rice farming, they often lack access to knowledge, finance and resources; have to combine their work in the rice fields with household chores and often lack control over decision-making in their households. These factors make female farmers particularly vulnerable to climate change and form a barrier for women to

equally participate and compete in economic activities and social development. In 2016, Quy Hau rice cooperative was selected as one of the partners under SNV's 'Enhancing Opportunities for Women's Enterprises' (FLOW/EOWE) project. Together with the Department of Agriculture and Rural Development (DARD), SNV is supporting Quy Hau to increase the resilience and economic opportunities of female rice farmers by supporting them in their transition to climate-smart agriculture through the application of the System of Rice Intensification (SRI) and by focusing on a transformation of key gender norms within households and the community.

Quang Binh Province

Disaster-prone Area
Regular flooding



Quy Hau Cooperative Timeline





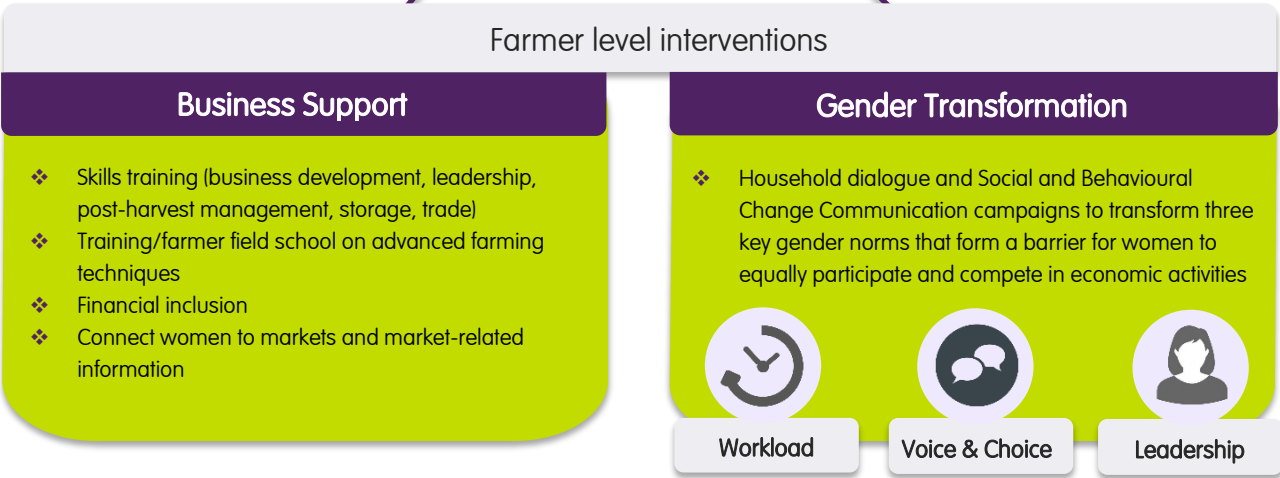
Women's Economic Empowerment through Cooperatives

SNV works through cooperatives in order to maximize impacts, facilitate inclusive value chain linkages between female smallholders, SMEs and markets and to transform gender norms not only at household level, but also at community level to establish processes and norms that are sustainable after the project's end. In addition to our support at cooperative and primary producer level, the FLOW/EOWE project focuses on improving the enabling environment by advocating for and supporting the development and implementation of gender-sensitive policies.



Quy Hau Cooperative

- ❖ Promote women leadership in farmer groups and the cooperative board
- ❖ Capacity building of cooperative board members (management, leadership, business skills, women's economic empowerment and gender equality)
- ❖ Market linkages



"While working with SNV under the FLOW/EOWE programme, we see that women have the ability and capacity to take leadership roles in households and the community when they are encouraged and confident. We are committed to create equal opportunities for both men and women to succeed in all fields."

Nguyen Tien Thiep, Director of Quy Hau Cooperative



Contact Information

Ms. Tran Tu Anh
 FLOW/EOWE Programme Manager Vietnam
 atrantu@snvworld.org

SNV Netherlands Development Organisation
 3rd Floor, Building D, La Thanh Hotel
 218 Doi Can, Ba Dinh, Hanoi
 Tel: +84 4 38463791; Fax: +84 4 38463794