



Climate Resilient **Agribusiness** for Tomorrow (CRAFT) Project

This five and a half year project is funded by the Dutch Ministry of Foreign Affairs, and implemented by SNV Netherlands Development Organisation in partnership with Wageningen University and Research, Accelerating Impacts of CGIAR Climate Research for Africa (AICCRA), Agriterra, and Rabo Partnerships.

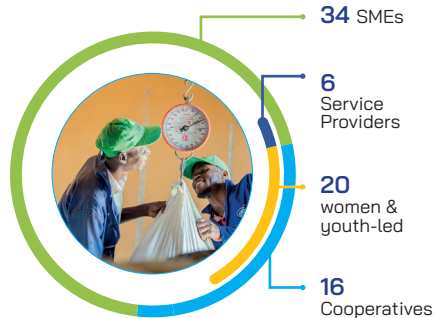
The goal of the project is to make resilient foods more accessible for the growing population in Kenya, Tanzania, and Uganda.

CRAFT is promoting thriving agribusinesses that are climate-smart, inclusive, scalable and have a clear value proposition to all stakeholders, especially smallholder farmers. Using a private sector-led approach, CRAFT has collaborated with 56 lead Agri-SMES and cooperatives to co-develop and co-fund climate smart business concepts and cases. CRAFT, through its **Climate Innovation and Investment Facility (CIIF)**, provides support to agribusinesses in becoming resilient to climate change. These successful agribusinesses, referred to as **'Business Champions'**, implement the business cases with the support of the project.

The business cases involve training and other extension services on climate smart agriculture practices, technologies, and services, which are provided by the Business Champion to targeted smallholder farmers. So far, **195,000 smallholder farmers** have adopted two or more climate resilient farming practices, and **131,000 smallholder farmers** have experienced an increase in incomes.

CUMULATIVE NUMBERS BY 2022

56 AGRIBUSINESSES have accessed the matching grant for the implementation of climate change adaptation practices and/or technologies in their respective value chains.



248K Smallholder farmers have been trained in climate smart agriculture practices and technologies



195K Smallholder farmers have adopted/ applied two or more climate resilient farming practices

131K Smallholder farmers have experienced an increase in their incomes

1.6K People have been employed by project validated SMEs, farmers groups and cooperatives












CRAFT is:

- ▶ Increasing income for smallholder farmers and SMEs through their increased adoption of climate-smart practices and technologies.
- ▶ Increasing business performance for agriSMEs and cooperatives through accelerating investments and business growth in climate smart value chains and increased involvement of youth and women in agribusiness development.
- ▶ Improving the enabling environment favourable for large scale roll out of CSA through increased collaboration and exchange among public-private actors on large scale roll out of CSA.

The project integrates learning and knowledge-sharing practices, along with gender and youth inclusion, in its work.

Each business case focuses on one of seven entry value chains- common bean, green grams, potatoes, sesame, sorghum, sunflower, and soybean. The value chains were selected based on their importance to the food system and climate risks. The project uses climate science to understand the impact of climate change on the value chains and identify the potential risks that affect them in East Africa.

Break down of Value Chains

	Potato	Sorghum	Green grams	Beans	Soybean	Sesame	Sunflower	Digital Providers	Total
									
Kenya	5	5	2	2	0	0	0	1	15
Tanzania	4	3	0	4	0	0	9	1	21
Uganda	1	0	0	0	12	2	4	1	20

The Climate Innovation and Investment Facility (CIIF) portfolio by December 2022

21.6 Million Euro

Total commitment

14.6 Million Euro

Grantee contribution

6.9 Million Euro

CRAFT Contribution



▶ Follow us on

-  @crafteastafrica
-  The CRAFT Project
-  CRAFT East Africa

▶ Reach us at:

E-mail: craft-info@snv.org
 Website: crafteastafrica.org

PROJECT PARTNERS

Funding Partner



Implementation Partners



WAGENINGEN
UNIVERSITY & RESEARCH

